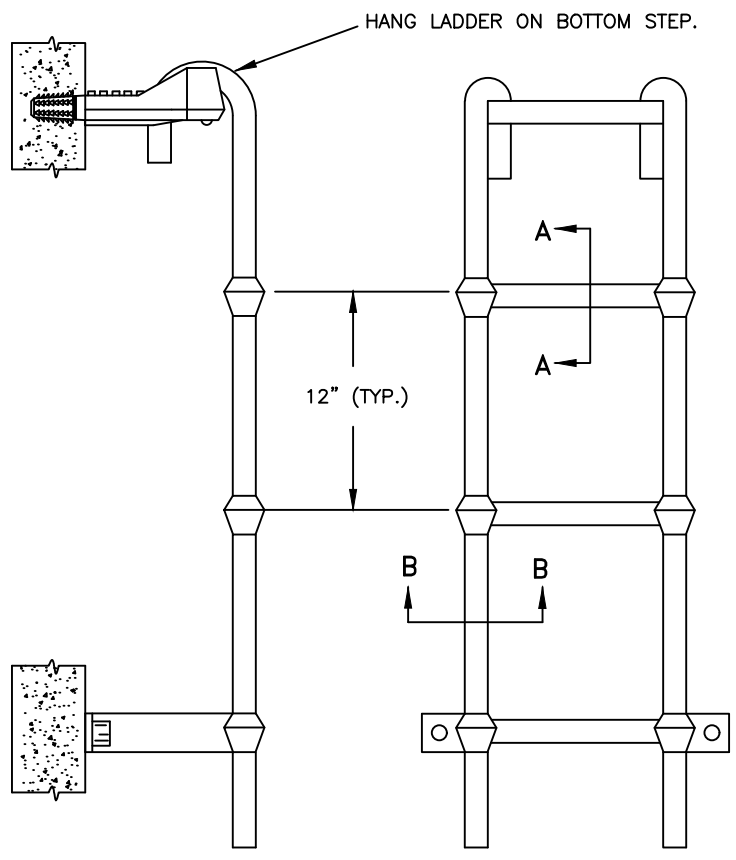
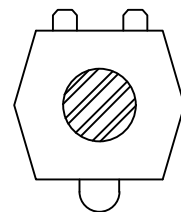


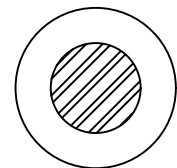
STEP



HANGING LADDER



SECTION A-A



SECTION B-B

NOTES :

1. STEPS TO BE LANE INTERNATIONAL #P-14938 OR DISTRICT APPROVED EQUAL.
2. FASTEN LADDER TO MH STRUCTURE WITH STAINLESS STEEL LAG SCREWS INTO LEAD ANCHORS, OR SET LADDER BASE INTO MH SHELF PRIOR TO CURING.
3. IF REQUIRED IN NECK/ADJUSTING RINGS, HAND HOLD TO BE LANE INTERNATIONAL #HAND HOLD.

MANHOLE STEPS AND LADDER

NOT TO SCALE

DETAIL APPROVALS
EDITOR TMC
MANAGER SJD

NORTHSHORE UTILITY DISTRICT
 2024 STANDARD SEWER DETAILS

6

LAST UPDATED
 FEBRUARY 2022